

U A V I

LIVE & UNWIND

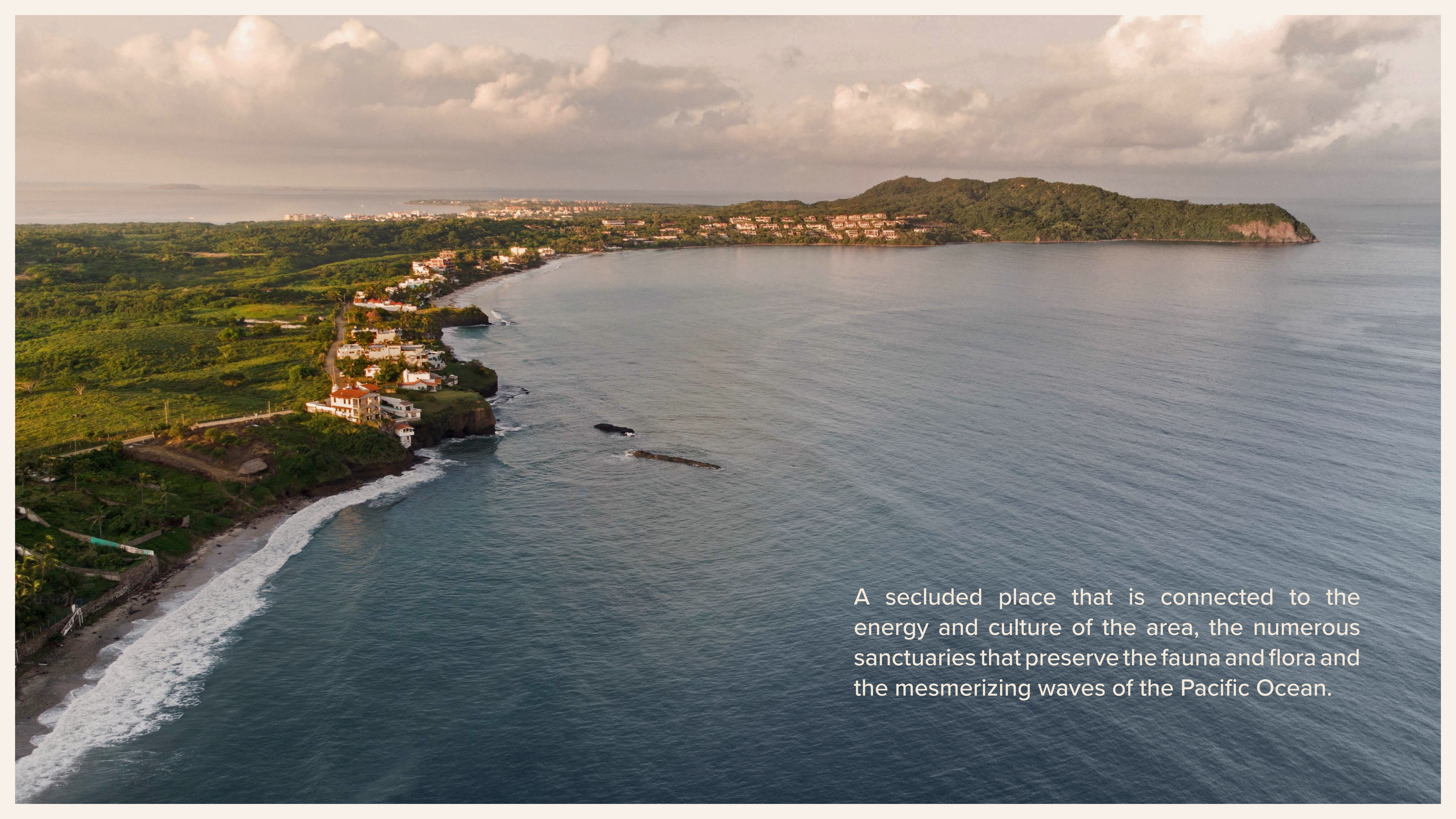
LITIBÚ - PUNTA DE MITA

A PRIVATE HABITAT AMIDST THE BEAUTY OF LITIBÚ

In Riviera Nayarit, within the private paradise of Litibú, UAVI is found - a community that establishes a new and exclusive lifestyle surrounded by nature.



Litibú is the Wixárika expression for "song of the birds".



A secluded place that is connected to the energy and culture of the area, the numerous sanctuaries that preserve the fauna and flora and the mesmerizing waves of the Pacific Ocean.

RIVIERA NAYARIT



- 5 min Punta de Mita
- 15 min Sayulita
- 20 min Cruz de Huanacaxtle
- 25 min San Pancho
- 25 min Bucerías
- 30 min Nuevo Vallarta
- 45 min PVR International Airport
- 60 min Puerto Vallarta




A HOME EMBRACED BY THE BEACH,
THE JUNGLE AND THE BLUE OF THE SEA

U A V I

LIVE & UNWIND

An extraordinary residential project
in the tranquil and secure gated
community of Litibú.



An aerial photograph of a coastal landscape. The left side shows the deep blue ocean meeting a sandy beach with white surf. To the right, a lush green mountain range descends to a residential area with modern white buildings. The sky is clear and blue.

An incomparable home that merges the natural luxury of the mountains with the most incredible views of the sea and direct access to unique services and experiences.

UAVI is derived from the Wixárika expression *muyúavi*, which means “where the blue is”.



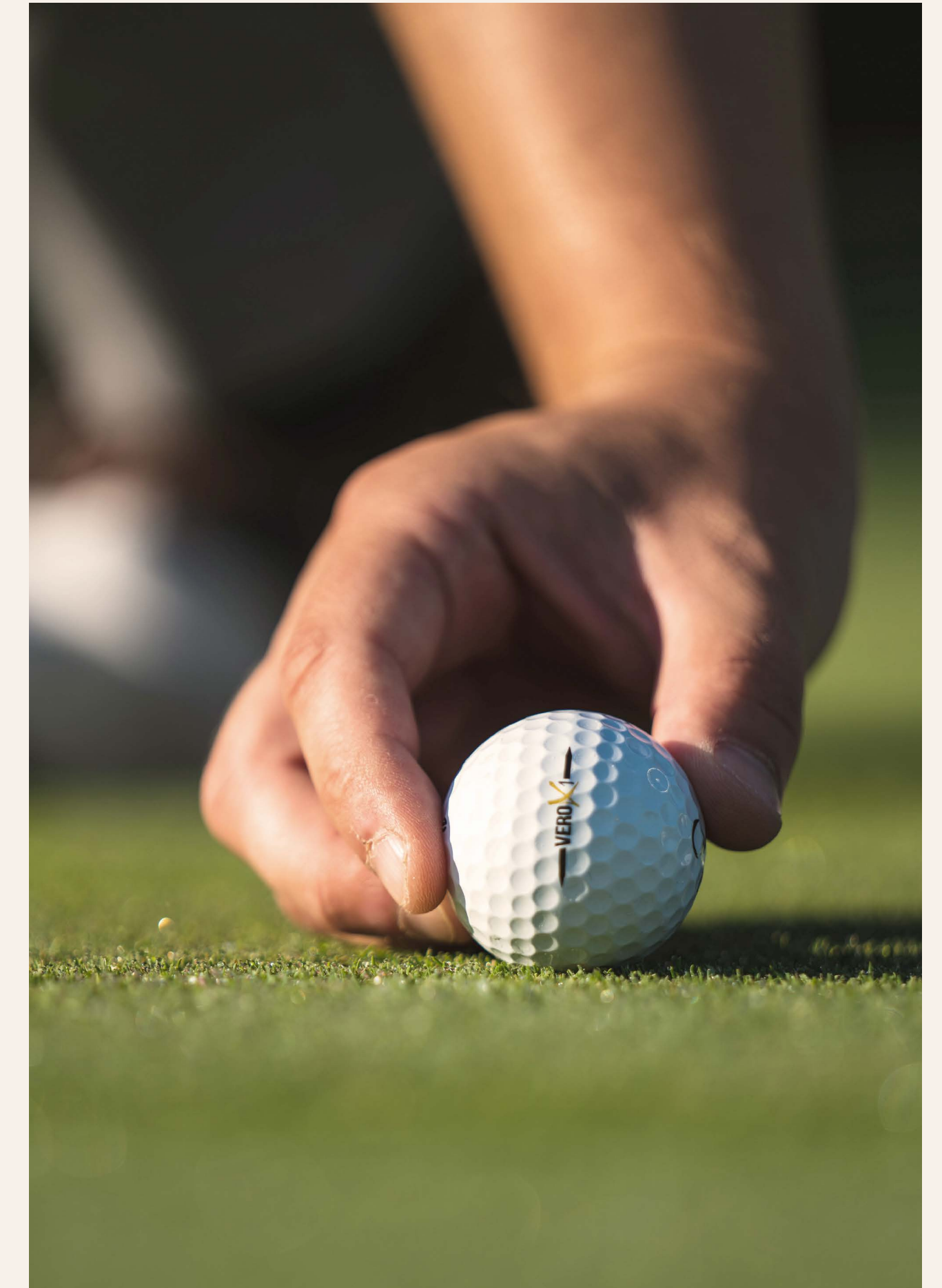


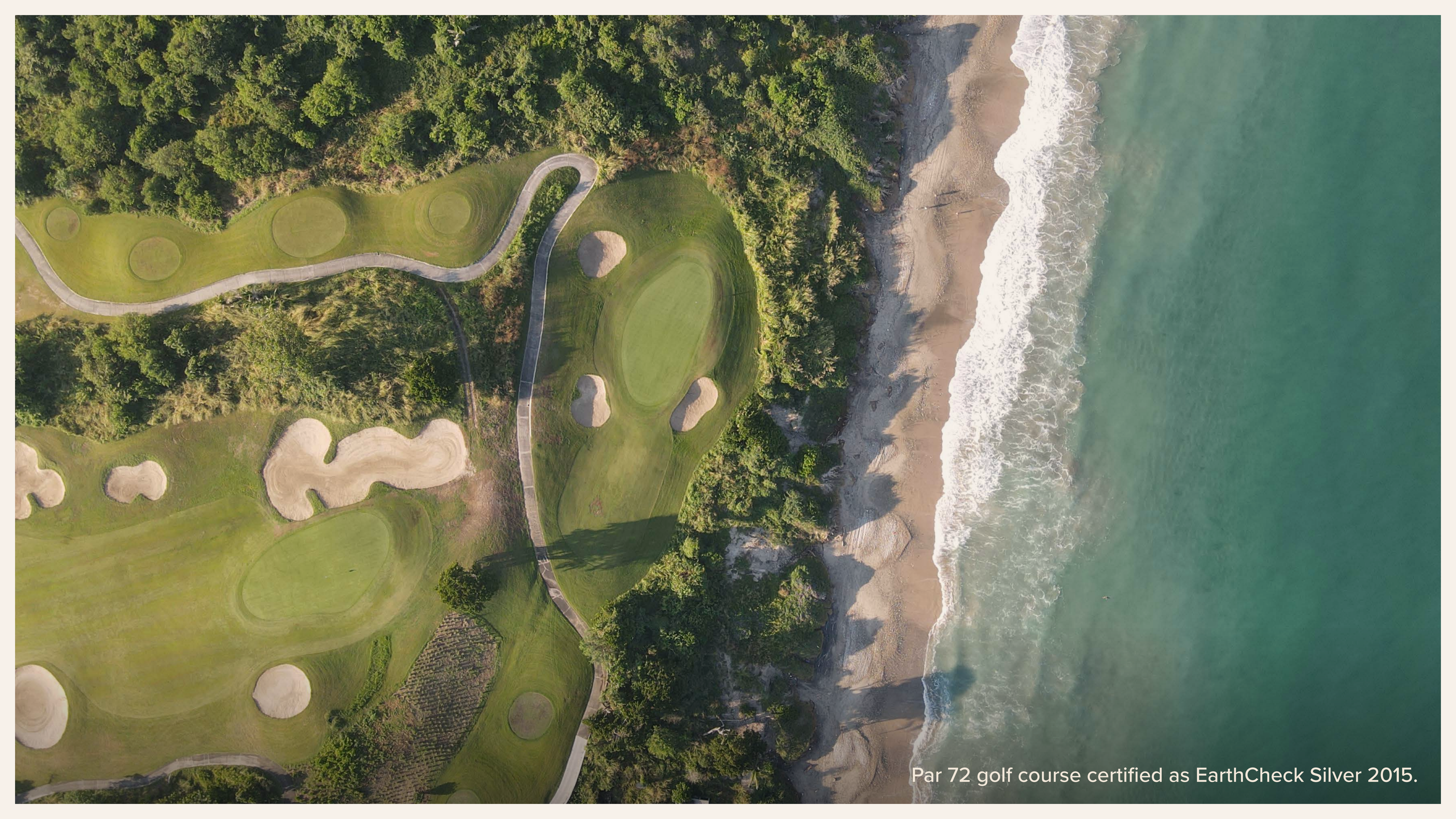
UNRAVEL ENDLESS SENSATIONS

An aerial photograph of a golf course, likely the Higuera Golf Course, showing a large green fairway and several sand traps. The course is surrounded by a dense forest of palm trees and other tropical vegetation. In the background, there are rolling green mountains under a blue sky with scattered white clouds. The text "LIVE WITHIN WALKING DISTANCE FROM THE HIGUERA GOLF COURSE" is overlaid in white capital letters across the center of the image.

LIVE WITHIN WALKING DISTANCE
FROM THE HIGUERA GOLF COURSE

UAVI sits within the 375 acres Litibú master-planned community, a few steps from Higuera, a fantastic world-class 18-hole golf course designed by Greg Norman.





Par 72 golf course certified as EarthCheck Silver 2015.

An aerial photograph of a coastline. The ocean is a deep blue, with white-capped waves breaking onto a sandy beach. The beach is bordered by lush green vegetation and a range of mountains in the background under a clear blue sky. The text "STUNNING OCEAN VIEWS FROM ALL RESIDENCES" is overlaid in white, sans-serif capital letters across the middle of the image.

STUNNING OCEAN VIEWS FROM ALL RESIDENCES

UAVI gives new meaning to the notion of Ocean View, with endless vistas of Litibú Bay from the apartments and grounds.

Infinity Pool



INSPIRED BY THE IMMENSITY OF THE BLUE

A project that emerges from the eternal hues of the horizon with a master plan that covers more than 215,000 sq ft of ocean frontage.

With the incredible ocean view as its muse, UAVI nurtures a lifestyle focused on contemplation.





Rooftop

A woman in a blue dress and straw hat stands on a balcony overlooking the ocean. The balcony features modern outdoor furniture, including a daybed with cushions and a round table with chairs. The scene is framed by a wooden structure, and the text "EXCEPTIONAL ARCHITECTURAL DESIGN" is overlaid in the center.

EXCEPTIONAL ARCHITECTURAL DESIGN

Spectacular architecture blends with the environment and culminates in an incredible panorama of more than 110 yards of beautiful beach with exclusive access.

5 independent towers comprising **44 apartments** with 3, 4 and 5 bedrooms from 3,455 to 7,319 sq ft, exclusive penthouses with terraces and pools and spectacular pent gardens.



Beachfront Pool



Pent Garden, Beach Tower





Kitchen



Kitchen



Master Bedroom



Master Bathroom

A SPACE FULL OF NEW POSSIBILITIES



UAVI goes beyond all expectations with more than **10 different amenities** and endless opportunities to simply flow and enjoy.

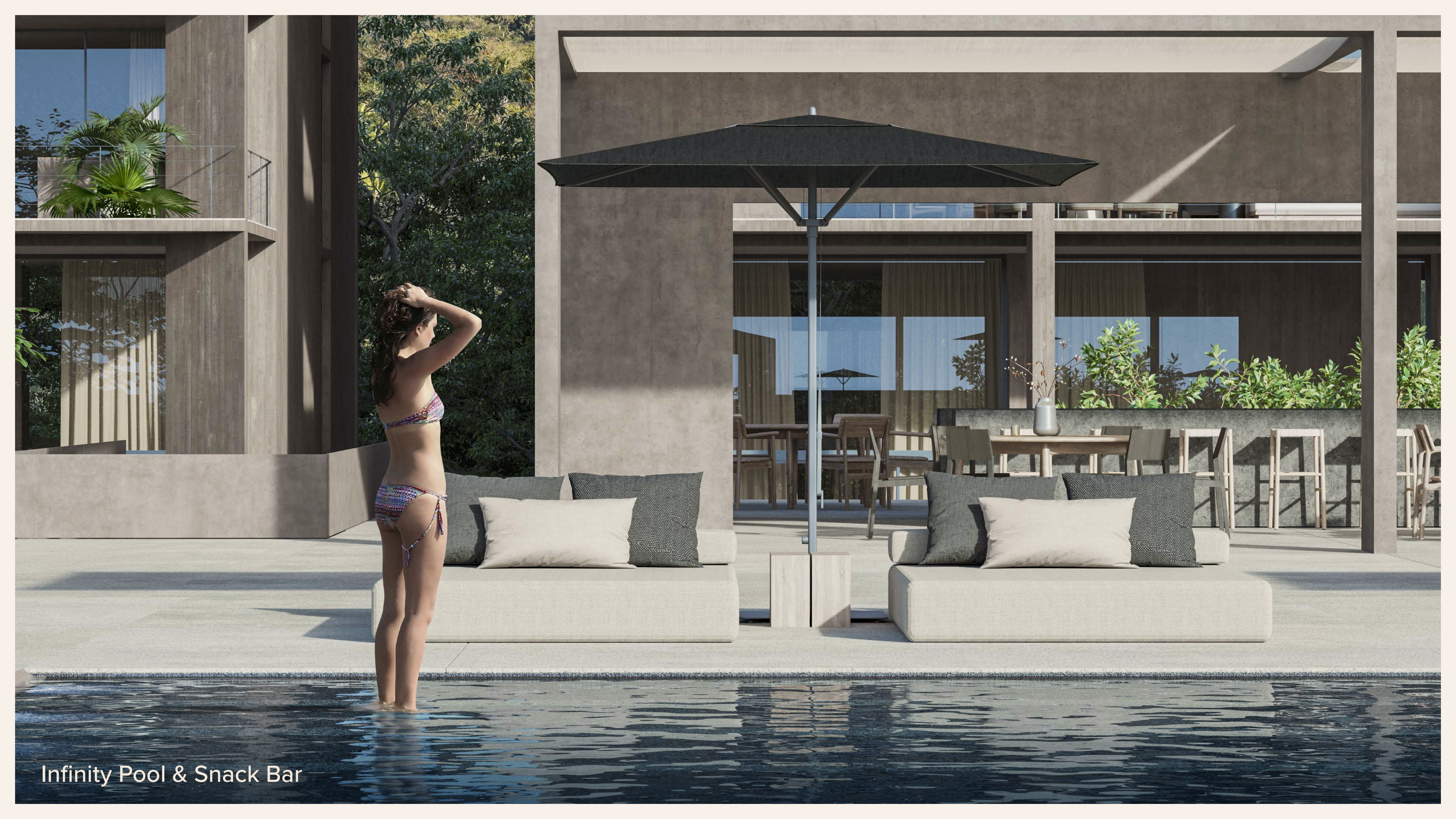


Infinity Pool & Snack Bar

Magnificent outdoor recreation and lounge areas to enhance living in the present and create unforgettable moments.

- Beachfront Pool
- Infinity Pool & Snack Bar
- Beach Club
- Sports Courts





Infinity Pool & Snack Bar



First class facilities with all the amenities needed to enjoy life to the fullest.

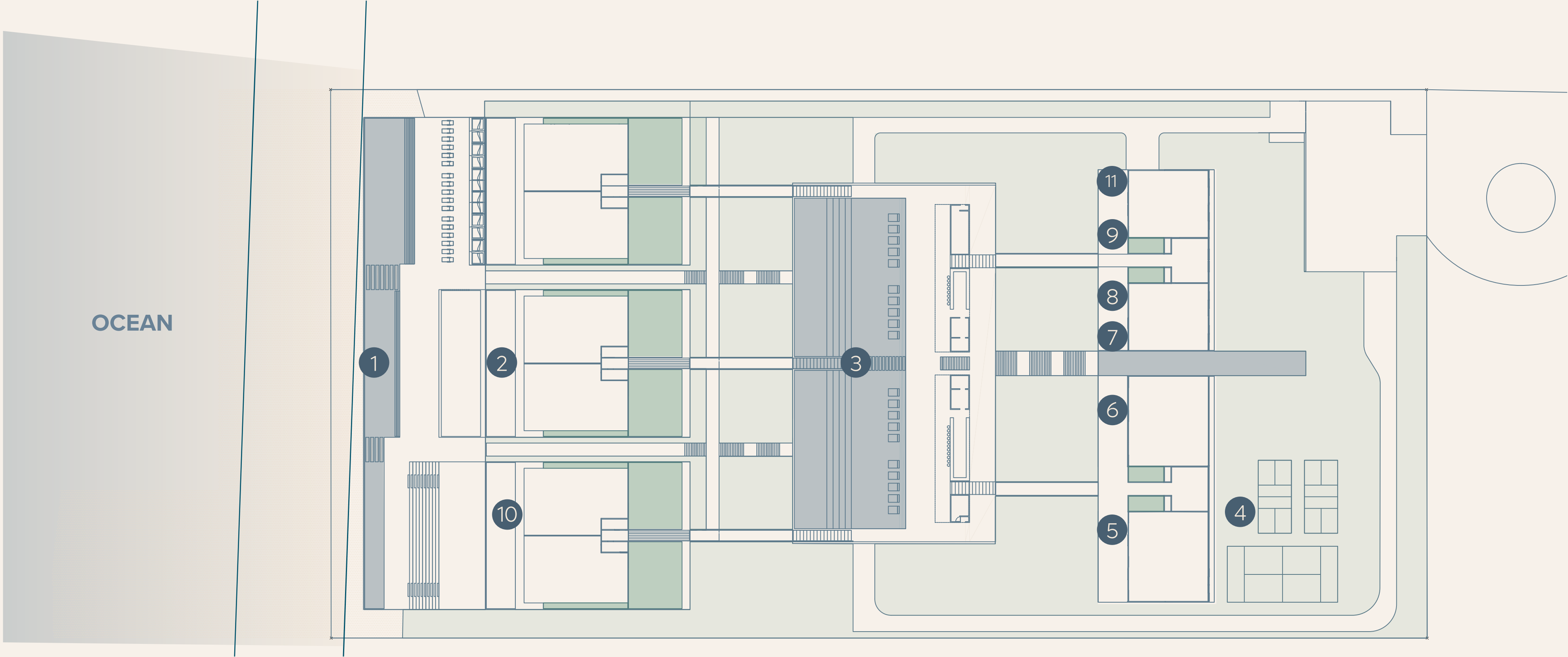
- Spa & Wellness Center
- Fitness Center
- Residents Lounge
- Kids Club
- Creative Hub
- Water Sports Shack
- Concierge



Spa & Wellness Center

Amenities

- 1 Beachfront Pool
- 2 Beach Club
- 3 Infinity Pool & Snack Bar
- 4 Sports Courts
- 5 Fitness Center
- 6 Spa & Wellness Center
- 7 Kids Club
- 8 Residents Lounge
- 9 Creative Hub
- 10 Water Sports Shack
- 11 Concierge



UAVI prioritizes the privacy and security of its residents with 131 covered parking spaces, two controlled-access entrances and a security system.



EXPAND YOUR PRESENT

A project by



With more than 20 years of experience in the luxury real estate sector, Terraforma is a Mexican company that has developed, built and marketed more than 6.5 million sq ft in distinctive projects in exclusive areas. Terraforma is currently working on 14 projects with an estimated value of US \$1 billion, successfully positioning itself in the market due to its excellent returns for partners and investors.



A luxury residential development firm with top locations in Mexico City, Tijuana and Riviera Nayarit. Cimbra has more than MXN \$1,360 million invested and MXN \$3,000 million in execution to date. As a real estate developer, the company differentiates itself through personalized service, high quality and added value. Under the Cimbra Partners brand, they enter the US market with an investment of more than USD \$100 million.



Zeiba is a boutique developer focused primarily on the Punta Mita and Puerto Vallarta area. With more than 15 years of local experience, Zeiba has executed five projects in the area and has others in progress. Some of their most notable projects are RESERVA Hacienda de Mita, Las Terrazas in Punta Mita, and Rivera Cuale in downtown Puerto Vallarta.

A unique vision, born from the union of three of the most notable luxury residential developers in the country.

In collaboration with

Pérez Palacios
Arquitectos Asociados

Founded in 2018 and led by Pablo Pérez Palacios, the firm is dedicated to architecture, art, planning, urban design and interior design projects with numerous international awards, and publications both in Mexico and abroad. Among its collaborations, PPAA has created collaborative projects with Rita Ponce de León and Abraham Cruzvillegas, participating in various international conferences and exhibitions.

PO
LEN
ARQUITECTURA DE PAISAJE

Integrating design concepts and the use of greenery, Alejandra de la Cerda and Ana Julia Carvajal founded POLEN, a multidisciplinary and collaborative landscape architecture studio based in Mexico City since 2010. Participating in diverse hotel, public space, residential, educational and corporate projects, POLEN develops each proposal according to the needs of the client, the space and the maintenance required, always with consideration of the environmental, ecological and social background.


dirección

Studio led by architect Mariana Morales focused on interior design, seeking to highlight the potential of space as an architectural element. Characterized by personal interaction with each of its clients, Dirección focuses on attention to detail, simplicity of elements, the lines and materials used, as well as an immense passion for design and Mexican crafts.

Cadena Concepts®

Multidisciplinary firm with more than 20 years of experience imagining solutions where design, innovation and creativity become real tools of transformation. Its multidisciplinary and collaborative approach is based on a methodology that solves problems through the encounter of science and intuition, making each project a wonderful process of thought and creation.